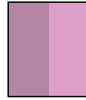


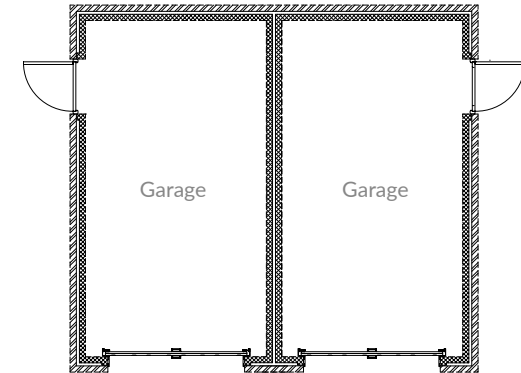
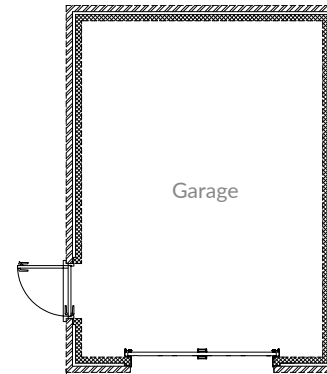
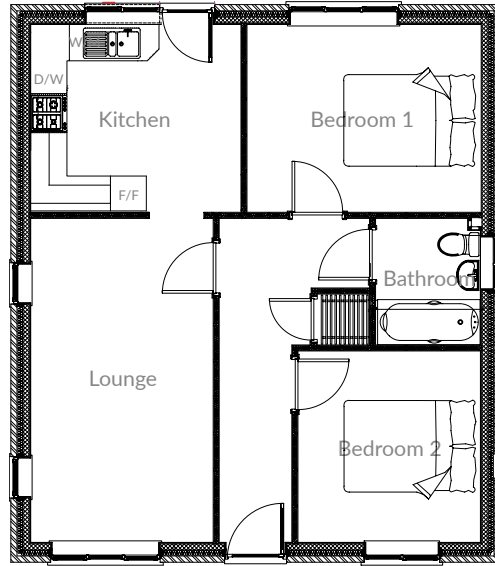
THE KINTON

2 Bedroom | Detached Bungalow

Total area: 62.6 sq m / 678 sq ft



KEY:	C: Cooker	T/D: Space for Tumble Dryer	B: Boiler
	D/W: Dishwasher	W/M: Space for Washing Machine	CB: Cupboard
	F/F: Fridge/Freezer	A/C: Airing Cupboard	W: Wardrobe



GROUND FLOOR

Lounge:	5.39 x 3.06m / 17'6" x 10'0"	Bedroom 2:	3.20 x 3.05m / 10'4" x 10'0"
Kitchen:	3.51 x 3.14m / 11'5" x 10'3"	Bathroom:	2.12 x 1.77m / 6'9" x 5'8"
Bedroom 1:	3.90 x 3.14m / 12'7" x 10'3"		

GARAGE (DETACHED)

5.56 x 4.00m / 18'2" x 13'1"

GARAGE (SEMI-DETACHED)

5.56 x 3.00m / 18'2" x 9'8"

Please note that this illustration is an example of this house type, all dimensions indicated are approximate and furniture layout is for illustrative purposes only. Homes may be 'handed' (mirror image) versions of all the illustrations and may be detached or semi-detached. Materials used may differ from plot to plot, including render and roof tile colours. Detailed plans and specifications are available for inspection for each plot from our sales office and buyers must check their individual specifications prior to making a reservation.

THE KINTON

2 Bedroom | Detached Bungalow



The Kinton is a charming two-bedroom detached bungalow with oil fired central heating and energy-saving rooftop solar PV panels.

Entrance hall leading to generous lounge with feature fireplace. Rear-facing fitted kitchen with door leading to back garden. Two double bedrooms and bathroom.

Outside is a detached single garage (semi-detached on plots 24 -25).



DOVASTON
• PARK •