

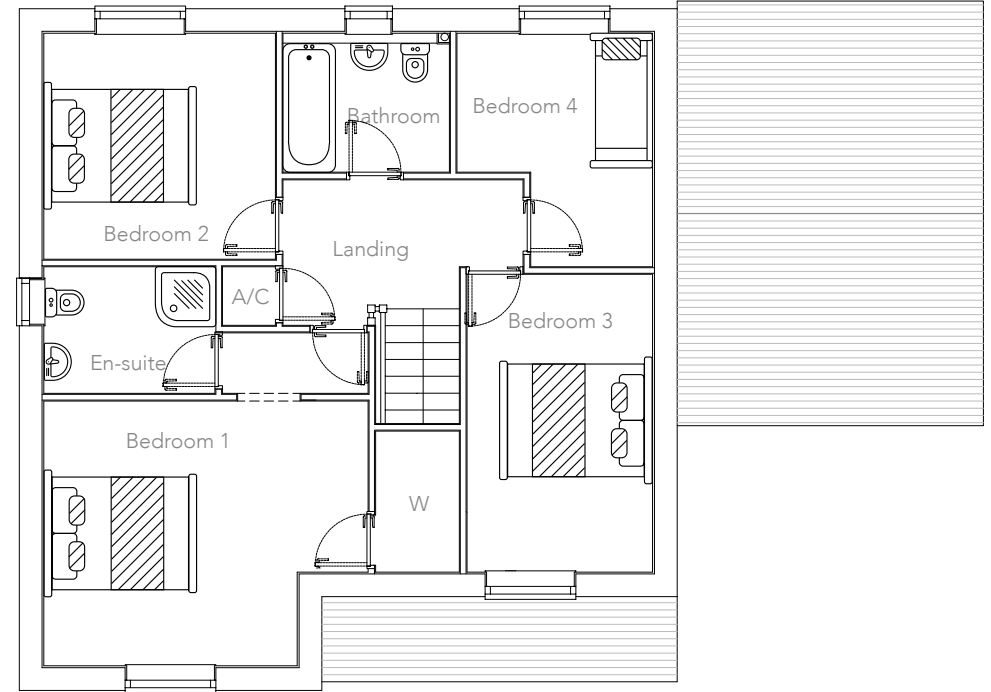
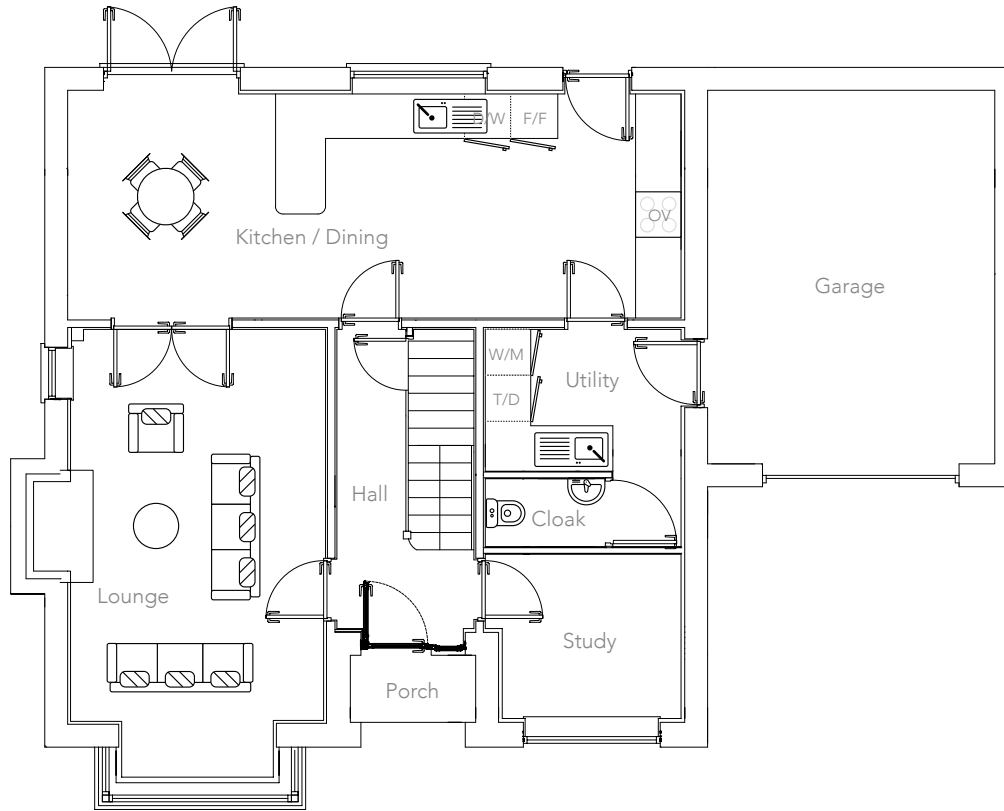
# THE ASTON

4 Bedroom | Detached House



<b>KEY:</b>	D/W: Dishwasher	W/M: Washing Machine Space	W: Wardrobe
	F/F: Fridge/Freezer	A/C: Airing Cupboard	OV: Oven
	T/D: Tumble Dryer Space		R/C: Range Cooker

**Note:** Bedroom dimensions taken into wardrobe recess. All wardrobes are subject to site specification. Please see Sales Consultant for further details.



## GROUND FLOOR

Kitchen / Dining:	7.94 x 2.99m	26' 1" x 9'10"	Utility:	2.66 x 1.80m	8'9" x 5'9"
Lounge:	3.38 x 5.20m	11'1" x 17'1"	Study:	2.66 x 2.32m	8'9" x 7'6"
Cloak:	1.60 x 0.90m	5'3" x 3'0"	Garage:	3.70 x 5.10m	12'2" x 16'9"

## FIRST FLOOR

Bedroom 1:	4.31 x 3.46m	14'2" x 11'4"	Bedroom 3:	2.65 x 3.92m	8'8" x 12'10"
En-suite:	2.26 x 1.67m	7'5" x 5'6"	Bedroom 4:	2.58 x 3.08m	8'6" x 10'1"
Bedroom 2:	3.12 x 2.98m	10'3" x 9'10"	Bathroom:	2.20 x 1.83m	7'3" x 6'

Customers should note that this illustration is an example of this house type, all dimensions indicated are approximate and furniture layout is for illustrative purposes only. Homes may be 'handed' (mirror image) versions of the illustrations and may be detached or semi-detached. Materials used may differ from plot to plot, including render and roof tile colours. Detailed plans and specifications are available for inspection for each plot from our sales office and customers must check their individual specifications prior to making reservation.

# THE ASTON

4 Bedroom | Detached House



With stylish bay-fronted window, covered porch and spacious hallway, the Aston is a family home with perfect proportions.

The light and airy open-plan kitchen/dining room features French doors to rear garden and access to the utility and attached garage. Double doors lead into the lounge which is the perfect entertaining space with log-burning stove. A private study provides the ideal work-from-home environment.

Upstairs the master bedroom features en-suite and built-in wardrobe, three further bedrooms and family bathroom.



TEDSMORE  
• GRANGE •