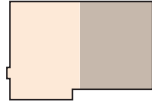


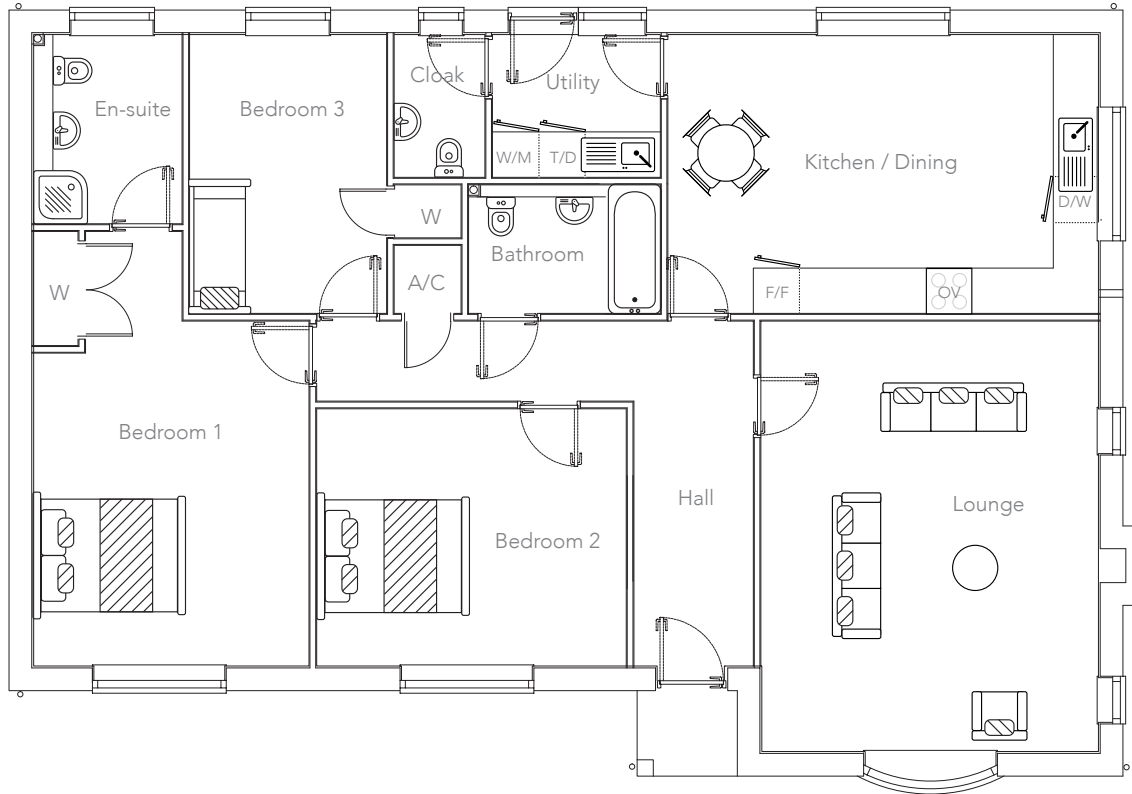
THE HAUGHTON

3 Bedroom | Detached Bungalow



KEY:	D/W: Dishwasher	W/M: Washing Machine Space	W: Wardrobe
	F/F: Fridge/Freezer	A/C: Airing Cupboard	OV: Oven
	T/D: Tumble Dryer Space		R/C: Range Cooker

Note: Bedroom dimensions taken into wardrobe recess. All wardrobes are subject to site specification. Please see Sales Consultant for further details.



GROUND FLOOR

Kitchen / Dining:	5.69 x 3.68m 18'8" x 12'1"
Lounge:	4.45 x 5.69m 14'7" x 18'8"
Utility:	2.22 x 1.91m 6'3" x 7'3"
Cloak:	1.19 x 1.88m 3'11" x 6'2"
Bathroom:	2.53 x 1.70m 8'4" x 5'7"
Bedroom 1:	3.64 x 4.56m 11'11" x 15'0"
En-suite:	1.96 x 2.50m 6'5" x 8'3"
Bedroom 2:	4.09 x 3.40m 13'5" x 11'2"
Bedroom 3:	2.60 x 3.68m 8'7" x 12'1"
Garage:	5.50 x 4.00m 18'0" x 12'0"

Customers should note that this illustration is an example of this house type, all dimensions indicated are approximate and furniture layout is for illustrative purposes only. Homes may be 'handed' (mirror image) versions of the illustrations and may be detached or semi-detached. Materials used may differ from plot to plot, including render and roof tile colours. Detailed plans and specifications are available for inspection for each plot from our sales office and customers must check their individual specifications prior to making reservation.

THE HAUGHTON

3 Bedroom | Detached Bungalow



Practical and beautiful, The Haughton is a three bedroom detached bungalow with style.

Featuring an open-plan kitchen/dining room with French doors creating a light, bright room with views and access to the rear garden. The large lounge with log burner is perfect for cosy evenings.

The master bedroom features en-suite and fitted wardrobes, along with a further double and single bedroom, plus a family bathroom. The property is finished off with a single detached garage.



TEDSMORE
• GRANGE •